



EREWASH VALLEY WOODTURNERS ASSOCIATION

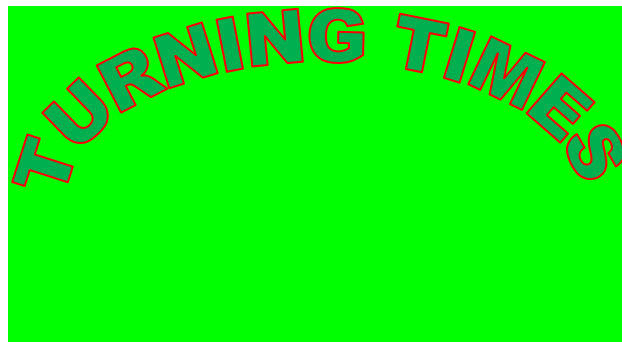
www.evwa.org.uk

e-mail: info@evwa.org

Chairman: Robin Barlow
99 Derby Road
Bramcote
Notts
NG9 3GW
0115 9254701

Secretary: Trevor Lewis
1 Kirkby House Drive
Kirkby-in-Ashfield
Notts
NG17 8JP
01623 755 156

Treasurer: Pat Noakes
30 Sherwood Way
Selston
Notts
NG16 6PZ
01773 813 545



No. 76 April 2018

Chairman's Comments

Thankfully spring has arrived giving those with outside workshops the opportunity of a warmer environment.

The snow in February forced us to cancel the Hands-On evening that month. However, the planned activity of spindle turning techniques was combined with the making of Vic's idea of 'spinning top golf' at the Hands-On in March. A very enjoyable evening.

At the AGM in March, Vic offered his resignation from the committee. Vic had been a committee member longer than all current committee members. His help and support over the years was gratefully appreciated.

I wish to offer a warm welcome to Chris Meaden, who has filled the position vacated by Vic. Chris has taken on the role of looking after our DVD library.

At the AGM, our treasurer, Pat(ricia), was able to maintain all previous membership and admission charges for the coming

year, and the minutes of the meeting were sent out by email soon after. Those on postal delivery will have a copy with this newsletter.

New membership cards are available at the desk upon payment of the annual fee, which remains at £20.

The David Francis Competition is to be held in June this year, Wednesday 13th. It may seem a while yet, but time gives you the opportunity to start developing your entry. May I remind you that the competition is an Open Competition, (i.e. any subject, as long as it has been predominantly turned on the lathe). It is open to all members, except last year's winner of the trophy.

Robin

EVWA PROGRAMME for the current year 2018/2019

2018

- Sat. Apr. 14th - Mark Baker

- Wed. Apr. 25th - Hands On

- Wed. May 9th - Gerry Marlow

- Wed. May 23rd - Hands On

- Wed. Jun. 13th - David Francis Competition

- Wed. Jun. 27th - Hands On

- Wed. Jul. 11th - Margaret Garrard

- Wed. Jul. 25th - Hands On

- Wed. Aug. 8th - Andy Lodge

- Wed. Sept. 12th - Sue Harker

- Wed. Sept. 26th - Hands On

- Wed. Oct. 10th - Philip Greenwood

- Sat. Oct. 20th - Gary Rance

- Wed. Oct. 24th - Hands On

- Wed. Nov. 14th - Keith Rowley Bowl & Chambers Competition

- Wed. Dec. 12th - Christmas Social

2019

- Wed. Jan. 9th - Robin Barlow
- Wed. Jan. 23rd - Hands On
- Wed. Feb. 13th - Terry Smart (Chestnut Products)
- Wed. Feb. 27th - Hands On
- Wed. Mar. 13th - Annual General Meeting
- Wed. Feb. 27th - Hands On

- Sat. Apr. 27th - Simon Hope

MICK HANBURY - Wednesday 14th February
Sycamore platter



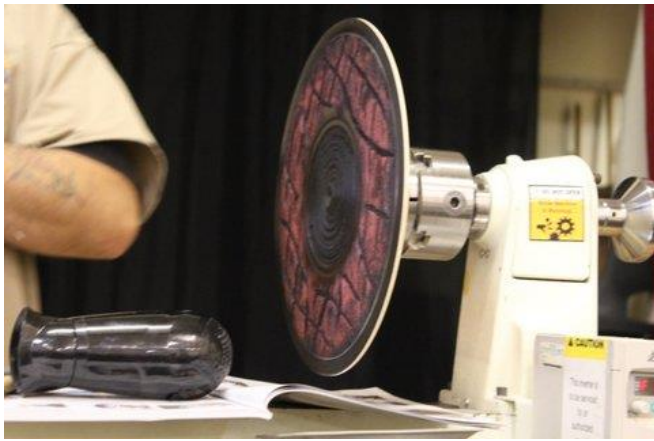
Using the Arbotech attachment



Ebonising spray applied as a base colour



Acrylic paint applied with sponge brush



Preparing to apply a small amount of silver paint



WEDNESDAY 11th APRIL

Robin Barlow

Acorn box and platter



Preparing to shape the cup - walnut



Hollowing the cup



Texturing the cup with a globe burr cutter



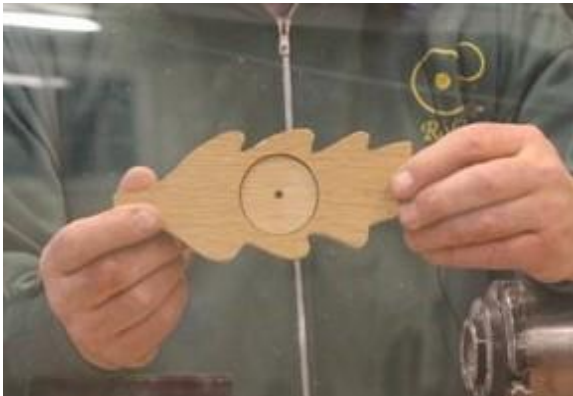
Hollowing out the nut



Reversing nut to finish



Reverse mounted to remove spigot



Acorn leaf platter – Initially mounted in Forstner cut recess



Finished acorn and leaf platter



Abrading base – showing spigot

Snail



Snail shell



Final shape of platter top



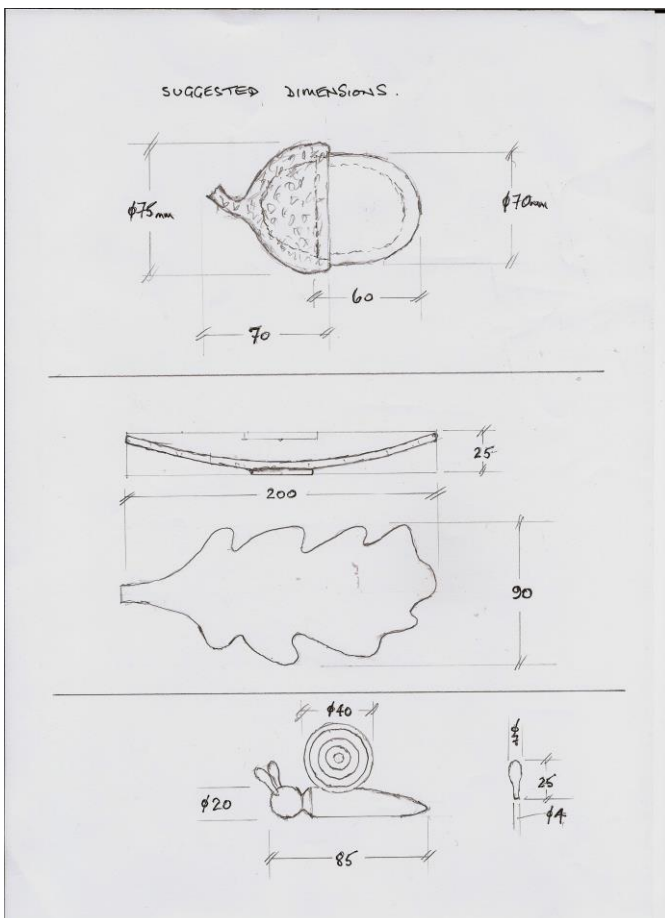
Snail body



Snail tentacles



Finished!



A selection of boxes

SATURDAY 14TH APRIL

DEMONSTRATION BY MARK BAKER the Editor of the 'Woodturning' magazine

Mark explained the three F's to consider – Function, Form and Finish



Sycamore blank between centres



Forming shape showing the base inset and spigot



initial consideration forming v cuts with a thread chaser



Final shape showing rim detail and shaped feet



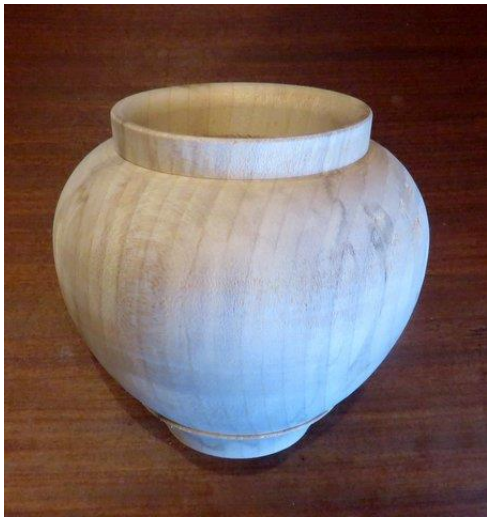
another consideration, coves cut with negative rake tool

Box with differing shaped lids



between centres turn to round and cut spigot





final shape of jar



SOME TIPS AND SUGGESTIONS FROM MEMBERS



checking the fit of the square lid



For repetitive work apply marks to tool rest




Dust covers on items such as chucks using old aerosol can lids, etc.



**Some Charity item suggestions by Robert Barnes
Thanks Bob for these hedgehogs and mice in logs**

GET YOUR ENGLISH HARD WOODS
FROM
STEVEN WRIGHT
at
ELSTON SAW MILL
Tel: 01636 525 015
Or direct from Steven on club nights



DVD Library

**Your club has a great selection of DVDs for
renting out. See Chris at the DVD desk for
details.**

Some Dates of Events and Shows

1. Turners Retreat

Spring Event – Saturday 21st April – free entry and
parking

Details on www.turners-retreat.co.uk

1. Makers Central

5-6 May at NEC Birmingham

Details on www.makerscentral.co.uk

2. Woodworks @Daventry

11-12 May at Daventry Leisure Centre

Organised by the Tudor Rose Woodturners

Details on www.tudor-rose-turners.co.uk

3. UK & Ireland Woodturning Symposium

30 June-1 July at Doubletree by Hilton hotel

Coventry

Details on www.ukiws.co.uk

4. North of England Woodworking Show

16-18 November at Harrogate

Details on www.skpromotions.co.uk