



EREWASH VALLEY WOODTURNERS ASSOCIATION

www.evwa.org.uk

e-mail: info@evwa.org

Chairman: Robin Barlow
99 Derby Road
Bramcote
Notts
NG9 3GW
0115 9254701

Secretary: Trevor Lewis
1 Kirkby House Drive
Kirkby-in-Ashfield
Notts
NG17 8JP
01623 755 156

Treasurer: Pat Noakes
30 Sherwood Way
Selston
Notts
NG16 6PZ
01773 813 545

TURNING TIMES

No. 74 November 2017

Chairman's Comments

It is this time of the year when you are all preparing for Christmas and the New Year, that Trevor also has the unenviable task of booking demonstrators for 2018 and into 2019.

The task is getting recognisably more difficult as the cast of demonstrators seems to be diminishing year on year. This dilemma is also often reflected by many other woodturning clubs, especially those based in the Midlands and Northern areas.

However, I do know that Trevor has put together another excellent forthcoming programme which will be made known to us all in the New Year.

Please note the change of demonstrator to that on your membership for January.

I must now reflect upon the recent Keith Rowley and Chambers Cup Competitions and express what a superb array of entries we had for both the competitions, far removed from the low number of entries we had this time last year. I found it quite difficult to place some of them into a winning order on my ballot forms, as I am sure many of you did too.

I was impressed with the effort made by all, and particularly from those members who joined our club during the past year. All entries are reproduced in this newsletter.

The results of these two competitions, together with the prize giving, will be

announced at the Christmas Social on Wednesday December 13th.

Regarding the Christmas Social, may I remind those of you who have purchased tickets to bring along your own choice of drinks and glasses. Cutlery and plates will be available during the serving of the buffet.

Also, please note that the evening commences from 6.30pm.

Finally, on Saturday 2nd December, a number of members will be attending the Christmas Fayre at Beauvale Priory. This is the last charity fund raising event this year where we shall be displaying your donated items made in your workshops and at our Hands-On sessions; holding a tombola for these items; and demonstrating woodturning.

May I take this opportunity, on behalf of the committee, to wish you all the best for Christmas and good health and success for the coming New Year.

Remember, think ahead for safe and successful woodturning

Robin

EVWA PROGRAMME for the current year 2017/2018

2017

Wednesdays

Saturdays

- Wed. Dec. 13th - Christmas Social

2018

- Wed. Jan. 10th - Rick Dobney
- Wed. Jan. 24th - Hands On

- Wed. Feb. 14th - Mick Hanbury

- Wed. Feb. 28th - Hands On

- Wed. Mar. 14th Annual General Meeting

- Wed. Mar. 28th - Hands On

- Sat. Apr. 14th - Mark Baker

REVIEWS

Gerry Marlow – September 13th

Gerry brought along a large selection of different pieces most involving resin inserts.



Gerry's Box with Resin patterned lid



Turn the blank to round and ensure a smooth top face.

Cut grooves at 45 degrees to the surface across the whole surface using thin cutter and jig.

Masking tape around the edge, standing slightly proud to create a reservoir so that the resin will not escape. Mix the 2-part epoxy according to the manufacturer, adding small amount of colour as required.



Pour into the centre of the turning. It should run outwards and around. Ensure it is level when pouring. Once the resin has cured, (a warm dust free environment is essential). Remount it on the lathe and shear cut the surface.



Take a router (bull nose cutter) in a jig and cut grooves from the edge to the centre— 36 grooves in this exercise. Sand the sharp ridges lightly. Part off the lid carefully. Reverse jam chuck to complete the underside of the lid.

Turn the inside of the box and sand it. Aim to make the lid a loose fit. Shape the outside. Reverse the box into the chuck jaws to shape the base. Mount the blank for the finial between centres and turn. Glue the finial to the lid.



Off Centre Candlestick

Take a blank with predrilled recess for the candle cup. Mount between centres and chamfer both ends.



Remount on diagonal corners.





Remount on centres and finish the base.



Notes by Heather Peake
Pictures by Trevor Handley

Andrew Hall Demo Wednesday 11th October

All the way through his demo Andrew emphasised the importance of being careful, protecting your eyes and lungs and was especially attentive to describing why and how.

Andrew started with a warm up piece, a piece that practices beads and coves.

Turning a bow tie.

A paper jointed blank of ash was mounted between centres.

Mark the position for the beads and coves.



Separate the glues joint, sand the back and round over the ends.



Fit elastic to the back of the bow using super glue and an upholstery stud.

Owls

The head of the owl is a sphere. Andrew had a video of turning a sphere at three times speed using a ball turning jig by Paul Howard. Using a doughnut chuck to clamp the sphere, the two eyes were shaped. On the diameter of the sphere use a compass to draw a circle. Put the compass point on the perimeter line to locate the centre of the other eye and draw the second eye circle.

With the sphere in the dough nut and the centre of one circle in line with the tail stock tighten doughnut chuck and remove the tail stock prior to shaping the eye.



Using a Jacobs chuck drill a hole for the eye.

Repeat for the other eye.



Turn the body to shape.
Scoop out the top, offer up the head to check the profile.
Part off with an undercut.
Buff to a shine. Glue in the eyes and cut in a v shaped beak.

Blues Bowls

Andrew brought with him several 3 string guitars which he referred to as blues bowls. He then proceeded to play these instruments proving that they were not just for show. They sounded great. He also had a Dobro guitar which had two bowls to it where both bowls had to be exactly the same size, shape and wood thickness. Again, Andrew played it to the delight of the audience.



*Notes by Heather Peake
Pictures by Trevor Handley*

Mark Sanger Saturday 28th October Demo

Mark's demo was excellent. He was careful to explain throughout what he was doing and why and also emphasised the need for health and safety and vigilance clearly illustrated with a picture of a large bowl shard where it should not be! Imbedded in the ceiling of his workshop.

Lidded Bowl with carved Finial

Sycamore seasoned blank.





Hollowing - drill out to depth using a colt forstner bit with an extension rod as required.



Mark recommends using suction rather than blowing to get the dust out of the item.

To sand the inside Mark had a homemade device made from a bent coat hanger also a velco pad on a rod.



Reverse mount to finish the base by placing a scrap cylinder inside to support it and then the tail stock.



For hollow forms, leave a very small foot for best design.

Finish – for utility pieces, food safe Danish oil and buff to a gloss. For decorative pieces sanding sealer and Renaissance wax, but burnish the wood before applying.

For the lid.



Blackwood used, but can use stained native timbers. Turn to fit the bowl part and mark on the rim width. For the finial a screw goes through the lid with the head of the screw hidden afterwards – 3mm drill for the screw.

A silver bead with a 2mm hole is incorporated into the finial. The finial – sketched out on paper, stick the paper on the wood and cut it out. Sand, or rotary carver, using drill burr cutters. Use end grain wood for strength.





Natural Edge Wet Wood Hollow Form

Ash wood.

Start with a round log mounted across the lathe. Drill a hole for the four prong drive to fit in.



Turn a spigot working towards the centre of the log. Mount in a chuck. Work both sides evenly, make the finishing cuts with the grain.



If cracks appear, apply lemon oil and super glue. Establish wall thickness at the top.

Lemon oil for finish, soaking both inside and out, use it to keep down the dust whilst sanding. Mount on waste wood with the tailstock (cone centre) brought up to finish the base.



Sculptural Vase

A vase - shaped with cut outs mounted on a plinth.



The plinth is a square piece of ash or oak, scorched. A small metal spacer such as those found between filing trays in stationery shops to attach to the vase.



Using a saw hole cutter. Draw slots on paper and glue to wood as a guide and cut out with a small rotary saw.

To texture use a high heat pyrography tool. Glue on the paper design and burn through cutting well into the wood.

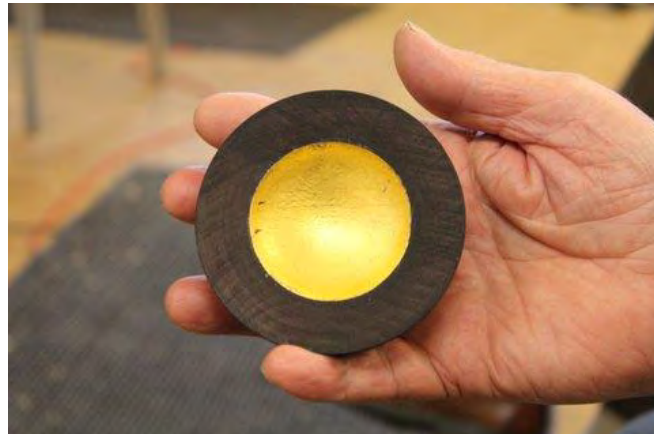


Acrylic artists paints and synthetic brushes. Stain the wood with black and red Chestnut wood stain, looking for a deep burgundy colour. Black and red paint mixed, paint over the texture. Allow to dry. Spun gold paint and a dry brush, go over the petals for highlights. For the inside of the vessel – gold leaf. Artists' gesso to cover over the grain of the wood.

Apply size (glue), allow to become tacky. Using loose leaf gold leaf, a gilder's pad and knife and a brush with the barest hint of Vaseline transfer the leaf to the inside of the vessel.

Use a soft squirrel brush to flatten out. Mount the vessel on the plinth.

The method of applying gold leaf was demonstrated on a small bowl.



Notes by Heather Peake
Pictures by Trevor Handley

=====
Keith Rowley Rose Bowl Competition – Entries





Chambers Cup Competition - Entries





GET YOUR ENGLISH HARD WOODS
FROM

STEVEN WRIGHT
at
ELSTON SAW MILL

Tel: 01636 525 015

Or direct from Steven on club nights

A black and white illustration of a man in a dark suit and hat, carrying a large log on his shoulder and holding a saw. He is standing on a path next to a small building and a tree.