



EREWASH VALLEY WOODTURNERS ASSOCIATION

www.evwa.org.uk

e-mail: info@evwa.org

Chairman: Robin Barlow
99 Derby Road
Bramcote
Notts
NG9 3GW
0115 9254701

Secretary: Trevor Lewis
1 Kirkby House Drive
Kirkby-in-Ashfield
Notts
NG17 8JP
01623 755 156

Treasurer: Pat Noakes
30 Sherwood Way
Selston
Notts
NG16 6PZ
01773 813 545

TURNING TIMES

No. 72 May 2017

Chairman's Comments

Looking back into the archives I have recognised that the first edition of Turning Times was published 17 years to the month, some 7 years after the formation of our club. At the time of this publication, the committee consisted of Derek Dent, Neil Hopkinson, Adrian Clarke, John Smith, Pete Walster, Neil George and Dave Wright.

Interestingly there was a plea from Derek in that edition for members to enter to forthcoming competitions – notably then, the Myford Trophy, the Chambers Cup and the David Francis Cup. Also the concept was raised to involve all members to vote for the competition

entries, something we have continued with.

At the recent David Francis competition, earlier this month, it was reassuring to see a marked increase in the number of entries – 32 entries from 15 individual members, in fact.

Instead of showing a DVD for the second period of the competition evening, we undertook to carry out a critique of those competition items, for each member who agreed.

I would be pleased for your individual thoughts of how the critique went, whether you would wish this to be continued and how we could improve this concept.

Photos of entries for the David Francis competition are shown in the following

pages. The winning entries will be announced during the meeting on Wednesday, June 14th.

Remember, think safety and turn safely.

Robin

EVWA PROGRAMME for the current year 2017/2018

2017

Wednesdays

Saturdays

- Wed. May 24th - Hands On - Cup and Ball with Trevor
- Wed. June 14th - Joey Richardson
- Wed. June 28th - Hands On - tea lights with Pat Murphy
- Wed. July 12th - Guy Ravine
- Wed. July 26th - Hands On - bud vases with Robin
- Wed. Aug. 9th - Steve Heeley
- Wed. Sept. 13th - Gerry Marlow
- Wed. Sept. 27th Hands On - bottle stoppers and coasters with Vic
- Wed. Oct. 11th - Andrew Hall
- Wed. Oct. 25th - Hands On - pestle and mortar with Trevor
- Sat. Oct. 28th - Mark Sanger
- Wed. Nov. 8th - Keith Rowley & Chambers Competition plus Bring & Buy
- Wed. Dec. 13th - Christmas Social

2018

- Wed. Jan. 10th - Dennis Robinson
 - Wed. Jan. 24th - Hands On
 - Wed. Feb. 14th - Mick Hanbury
 - Wed. Feb. 28th - Hands On
 - Wed. Mar. 14th Annual General Meeting
 - Wed. Mar. 28th - Hands On
-

REVIEWS

Roger Waterhouse Demo 11th January 2017

Roger explained that he is a specialist bowl turner and that wood is his passion. He likes to turn greenwood, in particular English hardwoods He mounted a blank in wet Sallow wood, (a form of willow). Roger turned at a very slow speed on the lathe as it was large and uneven. The blank was held on an expanding collar whilst he turned the outside shape and foot.



He used an Exocet tool for deep hollowing.



Roger was very passionate about grain and pattern in the wood. He had a piece of crotch wood which has grain meeting together and is therefore not straight grain. Roger then went on to show us some samples.



Words by Heather Peake
Photos by Trevor Handley



Tee light holder

Robin's demo – Feb. 8th

Robin decided to focus on making items that continue to be popular at the Charity fund raising events.



An apple box



Bottle stopper and bottle coaster



Finally, a hedgehog cocktail stick holder

Jason Breach – Saturday April 8th

Box



Boxwood turned to round between centres
And spigot formed at each end.



Lid parted off 1/3 of length – spigot in jaws.



Hollow out lid to dome shape



Body in chuck being hollowed out.



Tight fit of lid onto base



Shaping top section of base



Shaping the lid



Making jam chuck to remove spigot on the base.



(photo by Trevor Lewis)
Spheres



Between centres



Turn to basic shape



Between nylon centres to remove stubs
Ball then placed into jam chuck, a small flat face formed. Forstner drill to depth of 10mm. A further small flat cut at an angle to the hole. Clock fitted into drilled hole.

Pagoda Box



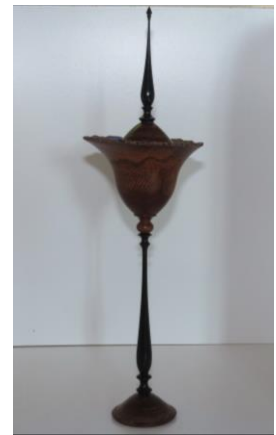
Showing the shape of lid and base of box.

Photos by Trevor Handley

David Francis Competition entries – May 10th



Gerry Marlow



Gerry Marlow



Gerry Marlow



Gerry Marlow



Gerry Marlow



Gerry Marlow



Malcolm Parkin



Malcolm Parkin



Mick Webster



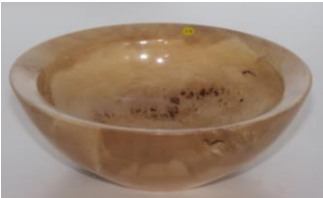
Mick Webster



Mick Webster



John Oliver



John Oliver



David Woodward



David Woodward



David Woodward



David Woodward



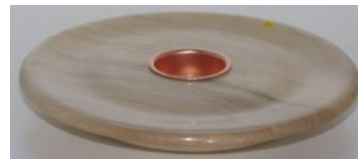
Bob Baron



Trevor Lewis



Trevor Lewis



Vic Ramsdale



Vic Ramsdale



Robin Barlow



Dennis Robinson



Alex Baxter



John Clark



John Clark



John Watson



Heather Peake



Pete Bostock



Pete Bostock



Pete Bostock

Charity fund raising.

Thanks to your contributions over the past 12 months, of items made in your own workshops and at the 'Hands On' evenings, we were able to present a cheque for £1500 to our nominated charity, 'School for Parents'. It is a small concern, based in Sneinton, Nottingham, that provides support to parents that have young children with cerebral palsy and Down's Syndrome. The help and support they give is to motivate the child's desire to perform tasks, whilst giving the parents the knowledge and confidence to understand how to help their child.

I recently received the letter below.

*School for Parents
C/o The Iona School
310 Sneinton Dale
Nottingham NG3 7DN t: 0115 9586641
e:enquiries@schoolforparents.org
www.schoolforparents.org*

10 May 2017

Dear Robin,

I am writing to ask you to pass on our deepest gratitude for the recent fundraising the Erewash Valley Woodturners Association have undertaken for School for Parents.

£1500 is a staggering amount to raise and we value the support your association has continued to give our charity. Without support such as yours we would be unable to continue to provide the vital education for parents, supporting and teaching them how to manage their child's disability and help them to reach their full potential in life.

I would love the opportunity to come and thank members personally and hear about your work and how the money was raised if you feel this would be appropriate.

Please contact my e mail andrea.kelly@schoolforparents.org or on 07977 194375 if I can be of any assistance.

Yours sincerely

Andrea Kelly

Community Fundraiser

Our next planned fund raising event, in fact, the first for 2017, will be on Saturday and Sunday, June 10th and 11th when we shall be at the Belper Steam Event. Would you consider coming along to help on one of the days? If so contact Trevor or me to discuss the details.

GET YOUR ENGLISH HARD WOODS FROM

STEVEN WRIGHT

at

ELSTON SAW MILL

Tel: 01636 525 015

Or direct from Steven on club nights

