



EREWASH VALLEY WOODTURNERS ASSOCIATION

www.evwa.org.uk

e-mail: info@evwa.org

Chairman: Robin Barlow
99 Derby Road
Bramcote
Notts
NG9 3GW
0115 9254701

Secretary: Trevor Lewis
1 Kirkby House Drive
Kirkby-in-Ashfield
Notts
NG17 8JP
01623 755 156

Treasurer: Pat Noakes
30 Sherwood Way
Selston
Notts
NG16 6PZ
01773 813 545

TURNING TIMES

No.65 May 2015

Chairman's Comments

It was with great sadness that I had to inform you recently that Rowland Seymour died suddenly earlier this month. As I write, his funeral arrangements are not yet known. My records indicate that Rowland had been a regular member of our club for almost 15 years, during which time he dedicated his photographic skills in taking photographs at our demonstration evenings and at our competition evenings, until recently when his illness prevented him to continue. Rowland was a very skilled woodturner, and, since becoming a member, had won all three of our competition trophies. Our thoughts go to his wife, Pam, and his family, at this sad period.



Rowland being presented at the Christmas Social last year, with a folder of photographs of his many Competition items.

On the first Saturday of this month, we had Mark Baker visit us to give an exceptional full day demonstration. It was again, being a Saturday, a disappointing attendance for such a skilled turner as Mark. His enthusiasm for promoting woodturning is alone demonstrated by the fact he had awoken at 4.00am that morning

to visit us. Perhaps the attendance was down to the fact that we had to move the date to the Bank Holiday weekend, but it again left us with a deficit for the day.

At the AGM in March, we presented a cheque for £2,000 to Andy Smith, a parent, on behalf of the School for Parents. A letter of thanks, from the School, is reproduced below.

The David Francis Competition evening, earlier this month had a total of 17 entries from 13 members. The winners of this competition will be announced and presented at the meeting on June 10th.

A number of us recently attended the first Charity fund raising event for this year – Felley Priory, on Sunday April 19th. Despite the low attendance, our takings were better than expected.

Our prime event of the year for fund raising will be at the Belper Steam Event next month. Details are on your membership card. Consider coming along to see us.

At the AGM in March, Rachel formally resigned from the Committee. I take this opportunity to thank Rachel for her support, and wish her well for the future - also to welcome on board our new Committee member, John Oliver.

Finally, have you paid your membership for the coming year? If not, from the end of this month you will no longer receive updates and correspondence from us.

Robin

School for Parents
c/o Iona School
310 Smeaton Dale
Nottingham
NG3 7DN
t: 0115 9586541
e: enquiries@schoolforparents.org
www.schoolforparents.org



17 March 2014

Mr Robin Barlow
Erewash Valley Woodturners Association

Dear Robin

Thank you for your donation!

Please would you pass on our very grateful thanks to all members of the Erewash Valley Woodturners Association for their incredible support during 2014 and raising a fantastic £2,000 for our charity!

We are absolutely delighted that Erewash Valley Woodturners Association have once again chosen School for Parents as their charity for 2015.

Having heard from Andy Smith at your AGM in 2014 and again this year, you will understand just how vital our free service is for parents who are feeling isolated and worried about their child's development, and how we meet a very specific (and largely unmet) need in helping these parents or carers; and how we enable their children to develop the skills that will help them to be more confident and independent, giving them the best possible start.

Your fundraising helps us help families from Nottinghamshire and Derbyshire and we appreciate your support very much.

Please do extend our invitation to those members that have not yet had a chance to visit to come and see us.

Kindest regards

Yours sincerely

Eileen Sleatford

My apologies for the small print of the above reproduced letter

EVWA PROGRAMME for 2015/2016

Wednesdays

Saturdays

2015

May 27th Hands On - Vic Ramsdale - pencil holders

June 10th Guy Ravine

June 24th Hands On - Pat Noakes - off-centre ducks

July 8th Robin Barlow

July 22nd Hands On - John Noakes - mortar & pestle

Aug. 12th Steve Heeley

- Sept. 9th Philip Greenwood
- Sept. 23rd Hands On - Pat Murphy
- Oct. 14th Gerry Marlow
- Oct. 28th Hands On - Trevor - a Christmas theme
- Oct. 31st Nick Arnull
- Nov. 11th Keith Rowley & Chambers Competitions & Bring & Buy
- Dec.9th Christmas Social
- 2016**
- Jan.13th Margaret Garrard
- Jan.27th Hands On
- Feb.10th Terry Smart (Chestnut Products)
- Feb.24th Hands On
- March 9th Annual General Meeting
- March 23rd Hands On
- April 23rd Richard Findley

FORTHCOMING EVENTS

Wednesday 27th May

Vic will be hosting the Hands On evening – making pencil holders. Look out for the email giving details of wood and sizes etc. required for the evening.

Wednesday 10th June

Guy Ravine will be our guest demonstrator.

Below are a couple of examples of his work.



Wednesday 24th June

Pat Noakes will be hosting the Hands On evening. Pat will be giving us the opportunity to make some off-centre ducks. These are a very popular charity item.

REVIEWS

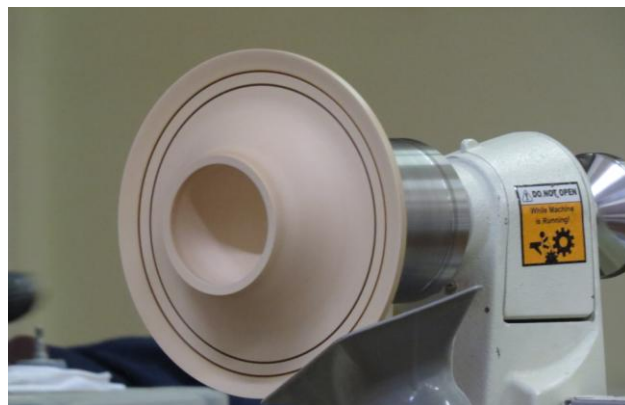
Alan Truman

Alan's project for the evening was to make an Ornamental Box and Ring Stand formed from three parts.

The base was turned from a 2" x 8" diameter piece of sycamore mounted in a screw chuck.



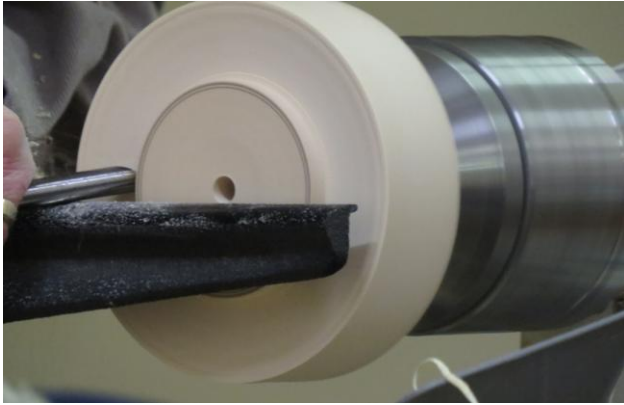
The piece was then reverse mounted in the chuck jaws to shape the top section



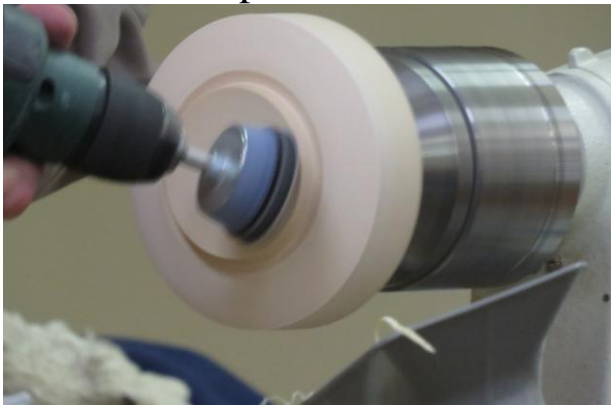
The 2 lines were burnt with a piece of 'formica'.

The finish was 2 coats of cellulose sanding sealer and Briwax finish applied with 0000 wirewool and polished

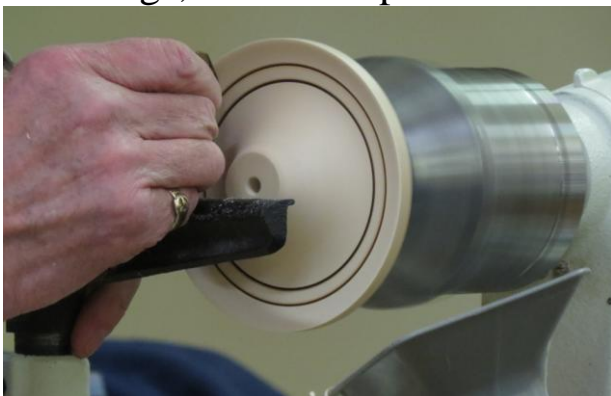
The top section was formed from sycamore, 1 1/2" x 5 1/2" diameter.



Spigot cut to match the recess of bottom piece,(centre drilled 5/16"), and cut to shape.



Reverse onto screw chuck. Shape and burn rings, finish and polish



Turn finial and a plug insert to finish.



A lovely finished, practical piece of turning from Alan.

Thanks to Rachel for the informative bits in this article

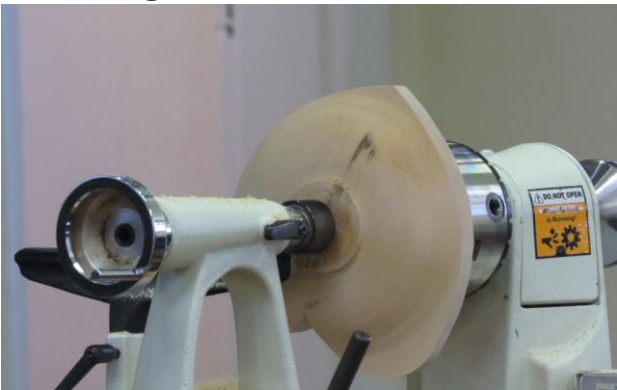
At the AGM in March – we were all graciously entertained by Steve Wright for the the second half of the evening, where he gave another of his very informative and enjoyable illustrated talks. Thanks Steve.

**EMMA COOK – aka The Tiny Turner
– Wed. 8th April**

Emma has recently started on the circuit of demonstrating woodturning, and clearly has a talent for woodturning and carving, and brought along an impressive selection of items to show. Her chosen item to demonstrate was a turned and carved heart shaped piece of lime with an crystal insert. The piece was described to represent waves from a dropped pebble. The piece was cut heart shaped before mounting on the lathe.



Mounted between steb centre and revolving tail centre



An Ogee shape to the base



Mounted on jaws the top face is shaped, ensuring sufficient wood is left to carve the ripples



Foot being hand carved off



Carving the ripples, previously drawn around a suitable crystal



Chalk used on the back of crystal to indicate the areas to carve for a good fit. Crystal finally glued in place.



A fine piece of Emma's talents



Another intricate piece of Emma's work

Thanks to Heather Peake for providing the descriptive for this article.

Saturday 2nd May

Mark Baker



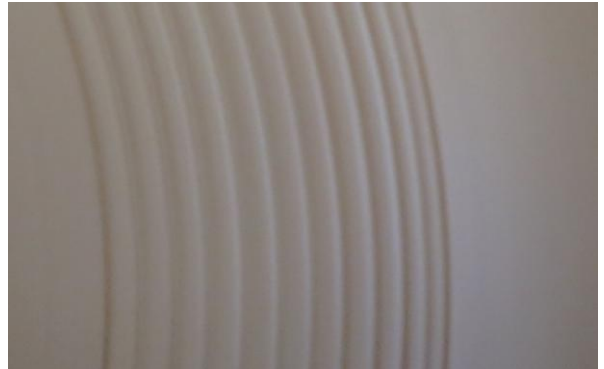
Mark, about to test our lathe with a respectable sized blank.



Outside being formed between centres



Forming the spigot for reverse turning



Use of the beading tool



Removing alternate beads with parting tool



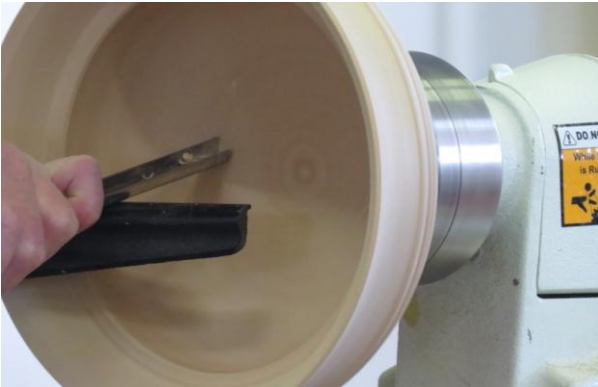
The final outside shape



Removing the centre core with a McNaughton Centre Saver



Removing the spigot from the bowl



Final cut inside the base before scraping



The final lid shape is almost there



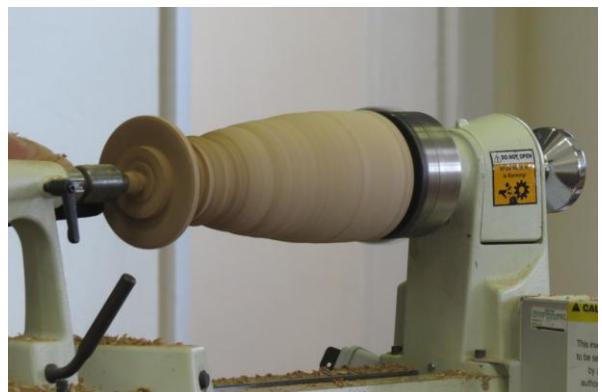
Forming the outside of the lid



Lovely shape and finish - with no abrasive



Shaping the underside of the lid



Next project



What is it?



This or....



Alternative shapes – for....



.....this



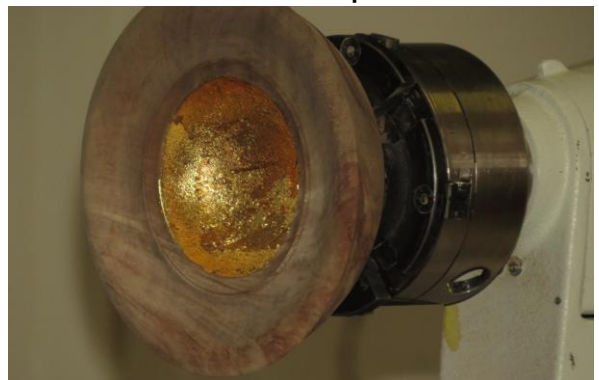
.....the next piece



Next – look at the shape



A platter?



Gold leaf applied



Rim carved to form three feet

A excellent end to a superb day, filled with facts, advice and ideas.

Chambers Trophy Competition

In the previous Turning Times we were not able to publish the winning photograph. So here is the winner – **David Woodward** with his vase in burr oak – being presented with the trophy and prize.



Well done David.

GET YOUR ENGLISH HARD WOODS
FROM
STEVEN WRIGHT
at
ELSTON SAW MILL
Tel: 01636 525 015
Or direct from Steven on club nights