



# EREWASH VALLEY WOODTURNERS ASSOCIATION

www.evwa.org.uk

e-mail: info@evwa.org

Chairman: Robin Barlow  
99 Derby Road  
Bramcote  
Notts  
NG9 3GW  
0115 9254701

Secretary: Trevor Lewis  
1 Kirkby House Drive  
Kirkby-in-Ashfield  
Notts  
NG17 8JP  
01623 755 156

Treasurer: Pat Noakes  
30 Sherwood Way  
Selston  
Notts  
NG16 6PZ  
01773 813 545

## TURNING TIMES

### No.63 November 2014

#### Chairman's Comments

The Christmas Festivities are almost upon us and your Committee are already focussing on the Christmas Social. For this evening to be a success it is necessary for us to be well prepared.

#### **Have you purchased your tickets yet?**

By selling tickets we can accurately judge the numbers attending. This helps tremendously with the catering needs.

The cut off date for purchasing tickets will have to be Sunday 30<sup>th</sup> November. If you still wish to purchase your ticket(s), please ring Pat Noakes, on the above telephone number.

Our Hands On evenings this year have been a great success, and has helped towards making so many items for our Charity events. Thank you all for your support. The next Hands On evening will be on the fourth Wednesday of January

next year. The theme will be - baby rattles.

The facilities at the Church Hall have improved markedly over the past year or so. Consequently we now have no use for our hot water urn, which is taking up precious space. Have you a use for the urn? Perhaps for your village hall! It will be given to the first person who voices an interest to Pat Noakes.

For many years, at our meetings, Rowland has been taking photographs of the demonstrators in action - photographs of their display items - and of course photographs of your entries at the Competition Evenings. His help and support has been tremendous and most of the photographs in each edition of the Turning Times have been from Rowland. Rowland has decided to finally place his lens cap firmly on his camera, (as far as our club is concerned). I openly thank

him for his devotion and support, without which, the information to you would be lacking in substance.

It is important to us that we continue taking photographs, for they convey information to us that cannot be matched with words.

**Have you the skills to take on this important support role?** If you wish to help please let Trevor or me know, either by email, telephone, or in person at a meeting.

Our final Charity fund raising event for this year will be at Beauvale Priory, on Sunday 7<sup>th</sup> December, at their Christmas Fayre. Consider coming along to see us and perhaps have a go on the tombola.

*Robin*

---

## EVWA PROGRAMME for 2014/2015

Wednesdays

Saturdays

November 12 Nikos Siragas

December 10 Christmas Social

### 2015

January 14 Dennis Robinson & Brian Thornton

February 11 Alan Truman

March 11 Annual General Meeting

April 25 Mark Baker

Reminder - Hands On evenings on the 4<sup>th</sup> Wednesday of each month EXCEPT August, November and December (see your membership card for details)

---

## FORTHCOMING EVENTS

**Wednesday 12<sup>th</sup> November – NIKOS SIRAGAS – A RARE OPPORTUNITY TO SEE NIKOS whilst he is visiting the UK from his homeland of CRETE.**



A sample of signature items from Nikos's web site

## **Wednesday 10<sup>th</sup> December**

**Christmas Social – please consider supporting this evening and purchase your ticket.**

**The evening is packed with – a raffle, a quiz, a Christmas Turning Competition, (bring yours along), an entertainer, (Craig Deegan), cold buffet, presentation of the Chambers and Keith Rowley Competitions.**

**Remember to bring along you own choice of drinks and glasses.**

**COMMENCES 6.30 pm**

## Wednesday 14<sup>th</sup> January

We have Dennis Robinson and Brian Thornton sharing their designs, talents and impartial advice throughout the evening.

## Wednesday 28<sup>th</sup> January

Hands On evening, hosted by Trevor. The theme will be making baby rattles. Details of requirements will be emailed to you nearer the event.

## Wednesday 11<sup>th</sup> February

**Alan Truman – a local Professional Woodturner visits us again.**

Samples of some of Alan's previous demonstration pieces



## Wednesday 25<sup>th</sup> February

Hands On - this evening to be hosted by Pat Murphy, and the theme, for Charity items will be making string holders - more about this nearer the time.

## ----- **MARK RABY – Wed. Sept. 10<sup>th</sup>**

### **Review by Heather Peake**

Mark specialises in wood finishing. (<http://www.markrabywoodfinishing.co.uk/>)

Mark's tips to guarantee a better finish:

- When sanding, never jump more than 100 grits
- When applying a finish or sanding, if your fingers get hot, stop, you might not be doing it quite right

Mark uses nylon sanding products such as Webrax as opposed to wire wool because wire wool has a tendency to break down and leave particles on your finished item which will then oxidise. The nylon products will also not degrade in terms of sanding grits. Always wear your PPE (Personal Protective Equipment) when sanding.

Colours for the Webrax products green (600 -800 grit), red (800 – 1000grit), grey (1000 – 1200grit), white (none abrasive).

Sand to required finish and tack cloth over it. Resist the temptation to run your fingers over the wood once it is ready to receive a finish.



Three main types of sanding sealer

1. Cellulose – universal sealer, fast drying (use cellulose if applying a Melamine finish)
2. Acrylic sealer – virtually universal (not for use with Melamine)
3. Shellac sanding sealer, not the most popular, but goes well with friction polish and wax.

Mark uses application cloth because it is designed not to soak up the products unlike kitchen paper which is designed to soak up as much as possible.

Mark demonstrated how to apply a friction polish and avoid getting rings and also the correct way to apply Carnuba wax.



Mark had some items on display that had been treated with Treatex- a hard wax oil which made the wood waterproof and stain resistant - useful for vases and drinking vessels.

To apply Treatex sand only to 400 grit to ensure penetration of the wood by the oil. Can be applied with a cloth or a brush. Give end grain an extra coat.



A question arose over whether Treatex was food safe or not with some discussion around the law on finishes and wood products. Treatex is described as surface safe and toy safe. To be food safe the finishing product must be below a certain level of measured migration into the food over a set time frame. Toy safe does not need this test.

Cutting wax. To remove stubborn scratches, apply the cutting wax on a cloth with the lathe spinning.. If you don't want the item to have a wax finish then acrylic sanding sealer can be applied over the wax and then your choice of finishes. This will improve durability of the finish.

Colouring and staining.

Start by sanding to remove the shine from the piece. Spirit stains (fast drying and UV resistant), easy to apply.





Do not seal the wood as the stain must penetrate the wood. The slower the lathe spins the heavier the stain. Feathering the edge enables each stain to blend into the next. Finally a yellow stain makes it all blend better.

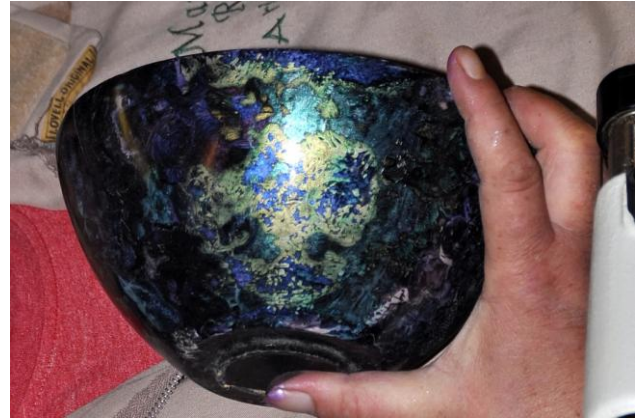


After staining, apply a seal. If you spray it on the stains won't move, if you wipe it on the stains may pick up.

Burnishing cream – a mild abrasive.

Follow the contour of the item to apply, travel smoothly and consistently. When using burnishing cream, initially the product will go dull before going shiny.

Buff-it wax. A coloured wax product in about 10 colours. It has similar uses to the gilt creams. Mark had an item with texture paste on it. This is a product by Joe Sonja that comes in black or white. It can be turned, sanded and coloured as well as applied in patterns.



The black works well with the iridescent colours in the Jo Sonja range. Put the cream on heavily; allow to dry, take the excess off with oil.



Create patterns in the paint, use fingers, a brush, a sponge etc. to make patterns. It is water based so will wash out. These paints do not require sealer as they are acrylic. It does need a finish to increase durability.

HVLP (High volume low pressure) technology is moving into acrylic finishing ranges. Nozzles are directable for the size of item being finished. Put on two coats and burnish to give greater lustre.



**LES THORNE - Saturday  
October 18th**

Les is a well known and respected woodturner throughout many countries, and it was a disappointment to have only 17 members turn out to see his demonstration.







Salt/pepper grinder



Rachel with the candlestick Les donated to our Charity table

**The Keith Rowley and Chamber Trophy Competition entries – Wed. October 8<sup>th</sup>**





**We shall be attending The Christmas Fair at Beauvale Priory on Sunday 7<sup>th</sup> December. Last year was a very successful day.**

**If you fancy a day out, come along and see us, you may even purchase that item you made at one of our Hands On evenings!!.**

**Do you use a dust extractor and/or a face mask when you are turning? Maybe an ideal suggestion for a Christmas present!**

**Be aware of the toxicity of many woods. Take a look at the following list of toxic woods – compiled by the HSE.**

<u>Timber</u>	<u>Adverse health effects</u>
Afromosia	Vomiting, skin irritation, nervous system effects
Alder	Dermatitis, rhinitis, bronchial effects
Ash	Decrease in lung function
Beech	Dermatitis, decrease in lung function, eye irritation
Birch	Dermatitis on sawing timber
Bubinga	Dermatitis, skin lesions
Cedar of Lebanon	Respiratory disorders, rhinitis

Cedar	Asthma, rhinitis, dermatitis, central nervous system effects
Sweet Chestnut	Dermatitis
Douglas Fir	Dermatitis, splinters go septic, , rhinitis, bronchial effects
Ebony	Mucous membrane irritation, dermatitis
Hemlock	Bronchial effects, rhinitis
Idigbo	Possible irritant
Iroko	Asthma, dermatitis, nettle rash
Larch	Dermatitis, nettle rash
Mahogany	Dermatitis, Mucous membrane irritation, respiratory disorders
Maple	Decrease in lung function
Meranti	Skin irritation
Oak	Asthma, sneezing, eye irritation
Padauk	Itching, eye irritation, vomiting, swelling eyelids
Pine (most)	Skin irritation, decrease in lung function
Poplar	Sneezing, eye irritation, may cause blisters
Ramin	Dermatitis
Rosewood (most)	Dermatitis, respiratory disorders
Sapele	Skin irritation
Spruce	Respiratory disorders, possible photosensitisation
Teak	Dermatitis, nettle rash, , respiratory disorders
Utile	Skin irritation
Walnut (not African)	Sneezing, rhinitis
Wenge	Splinters go septic, drowsiness, visual disturbance, abdominal cramps
Yew	Dermatitis, systemic effects, eg headache, blood pressure drop, cardiac effects

**The Annual Woodworking Show at Harrogate is being held on Fri 21<sup>st</sup> Nov. until Sunday 23<sup>rd</sup> November. It is the largest such show in the U.K. and well worth a visit. Show offers/ discounts are likely again, from many traders.**



**ITEMS FOR SALE**

**- POOLE WOOD PRESTIGE LATHE**  
48" between centres, variable speed,  
rotating headstock

**- SMALL DRILLING MACHINE**

**- SMALL TABLE SAW**

**- DUST EXTRACTION UNIT**

**- VARIOUS CHUCK JAWS AND  
ACCESSORIES**

**FOR DETAILS SEE: GERRY GAMBLE**

**TEL: 07817 377 567**

GET YOUR ENGLISH HARD WOODS  
FROM

**STEVEN WRIGHT**

at

**ELSTON SAW MILL**

Tel: 01636 525 015

Or direct from Steven on club nights

